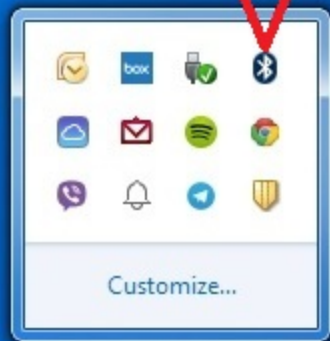


eton

EMPOWERED BY NATURE

Starting notes: Turn on your Eton speaker and put it into bluetooth pairing mode. The speaker in this example is named "Rugged Rukus". Please substitute the name that your Eton speaker displays when it is detected by your computer for "Rugged Rukus" for the rest of the instructions that follow.

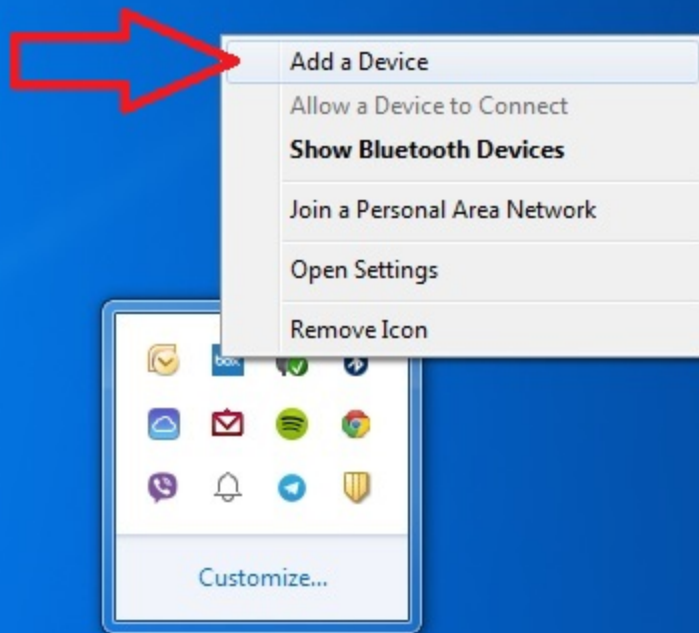


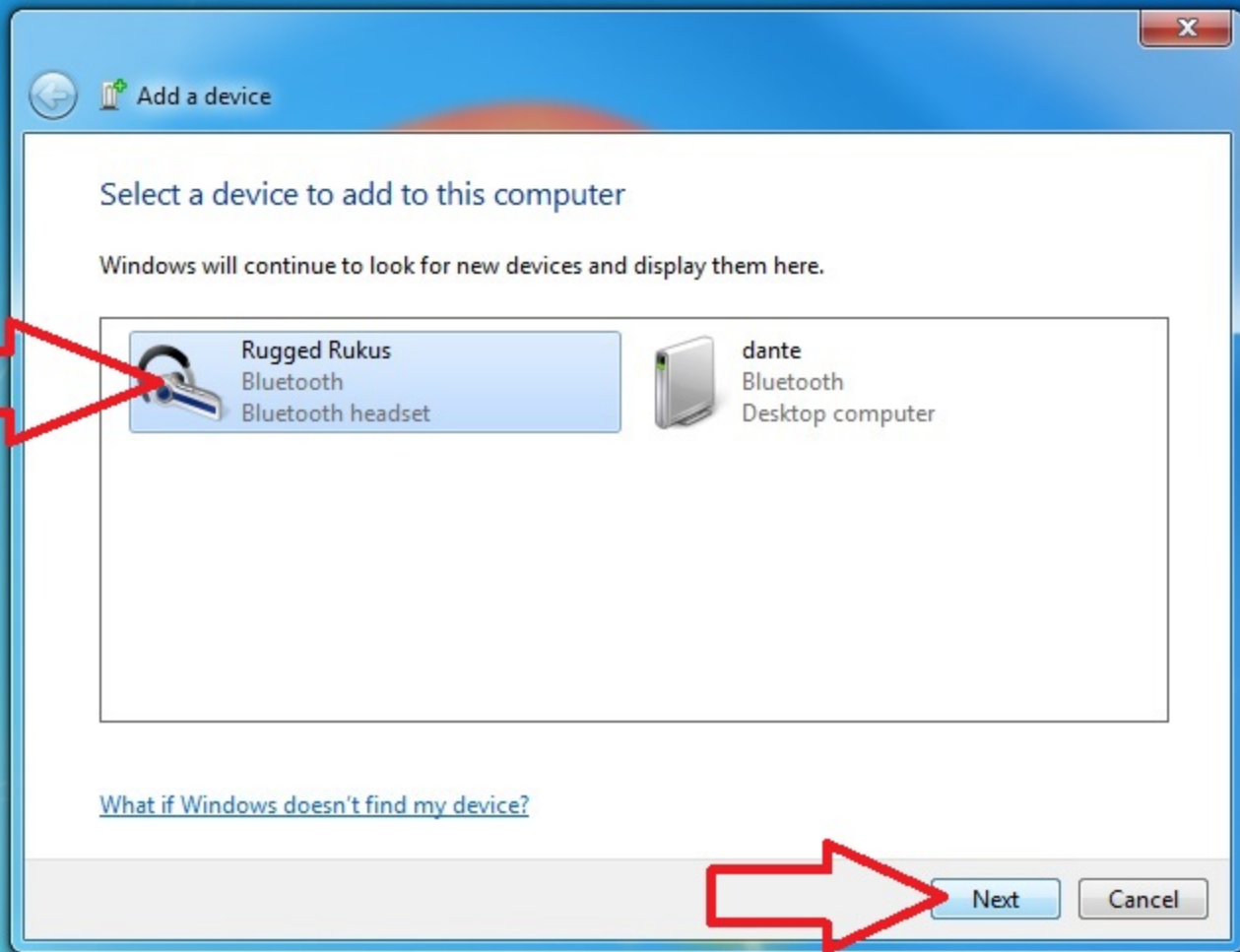
Step 1: right-click bluetooth icon on lower-right corner of desktop



10:34 AM
6/9/2014

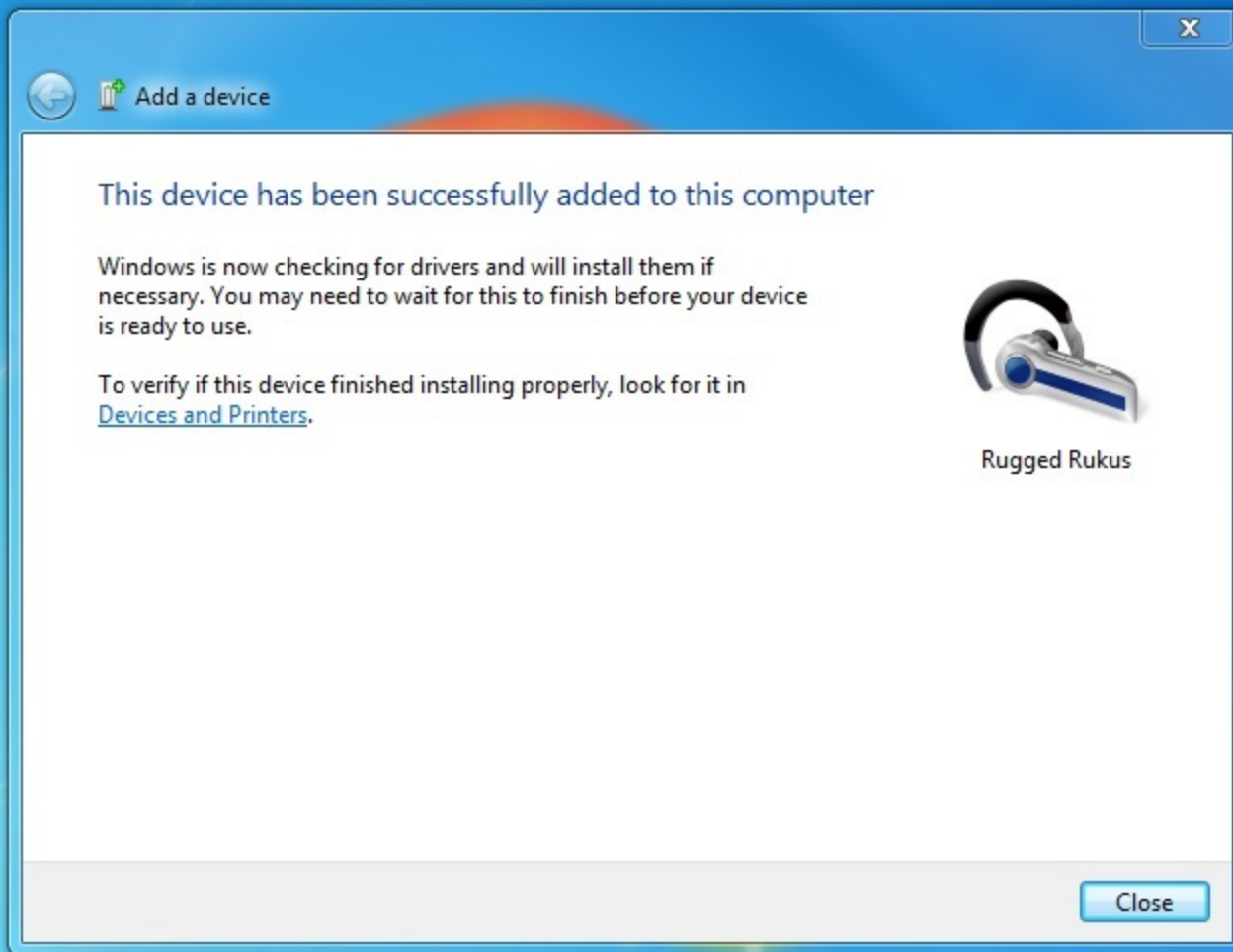
Step 2: click "Add a Device"



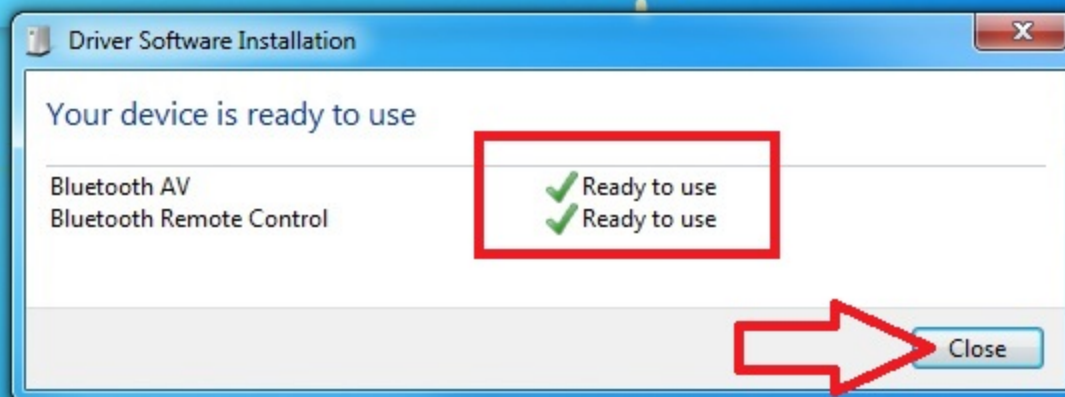


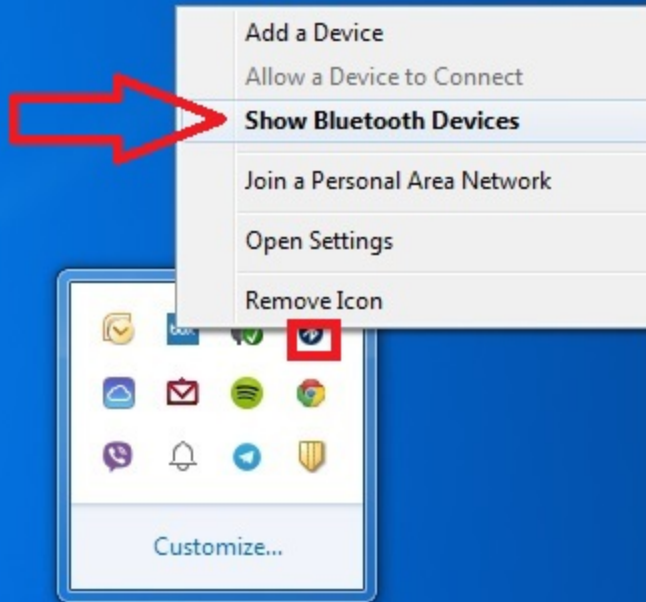
Step 3: click "Rugged Rukus"

Step 4: click "Next"



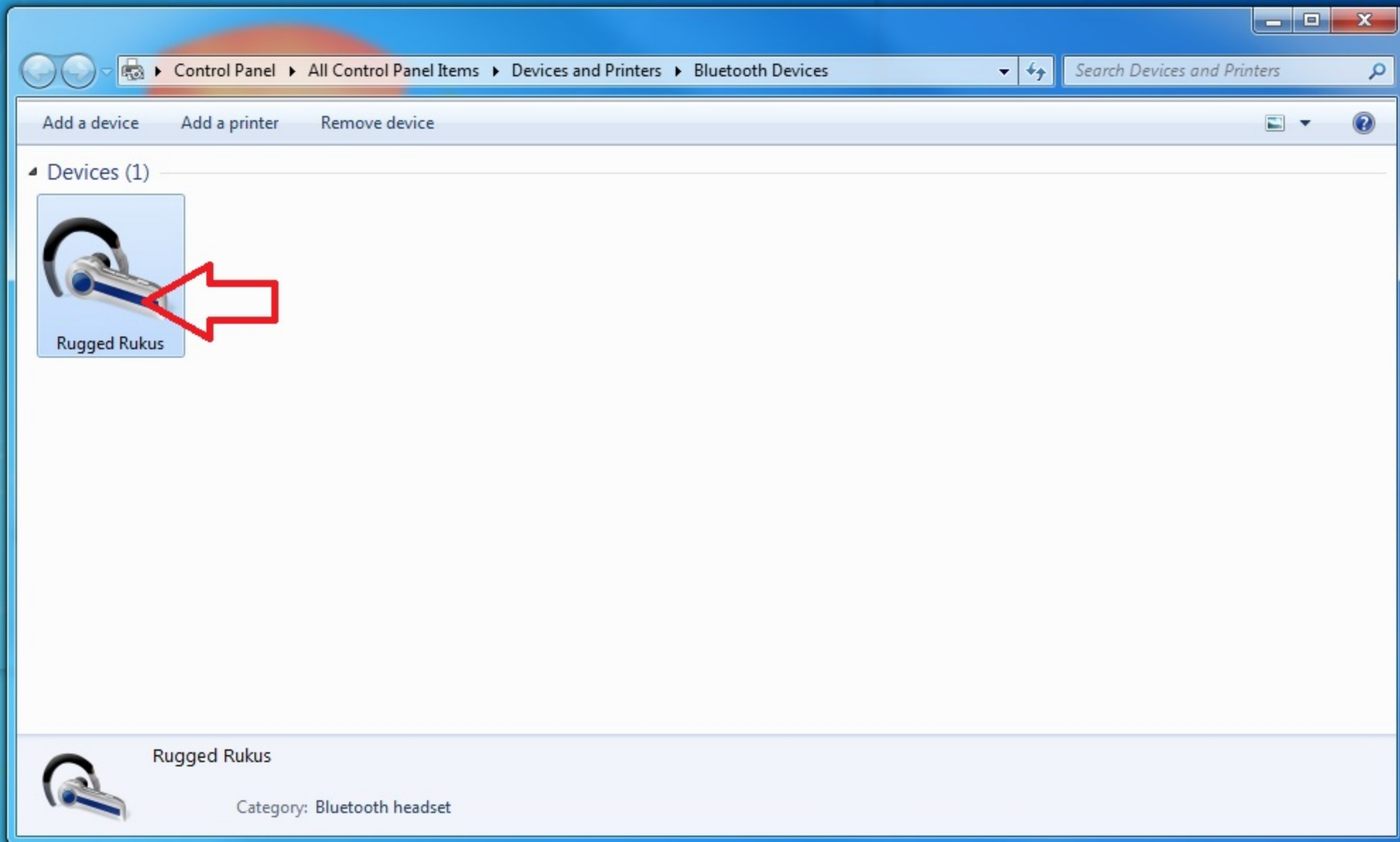
Step 5: wait for Driver Software Installation to complete and when all items say "Ready to use" with a green checkmark next to them click "close"



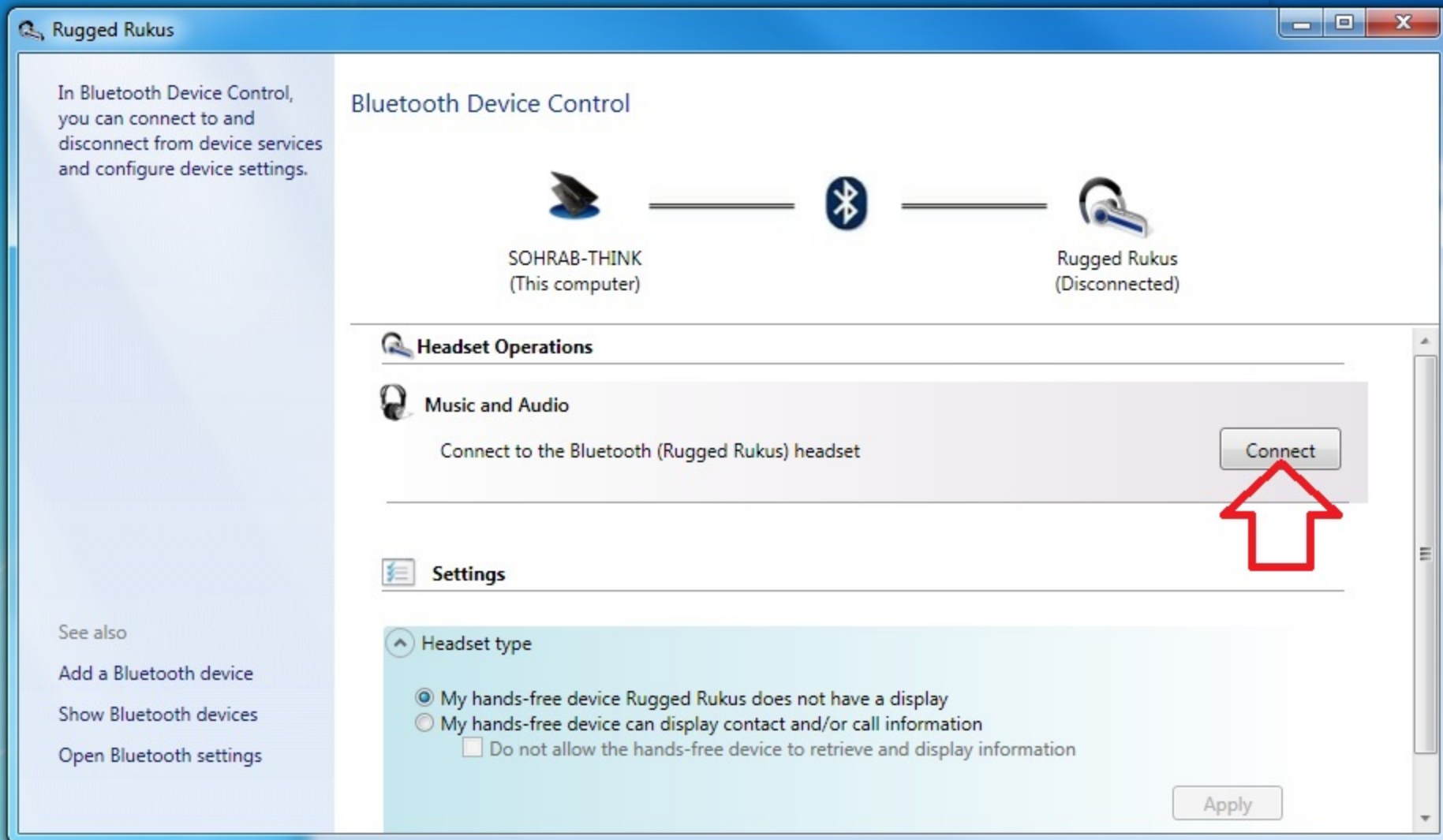


Step 6: right-click bluetooth icon on lower-right corner of desktop

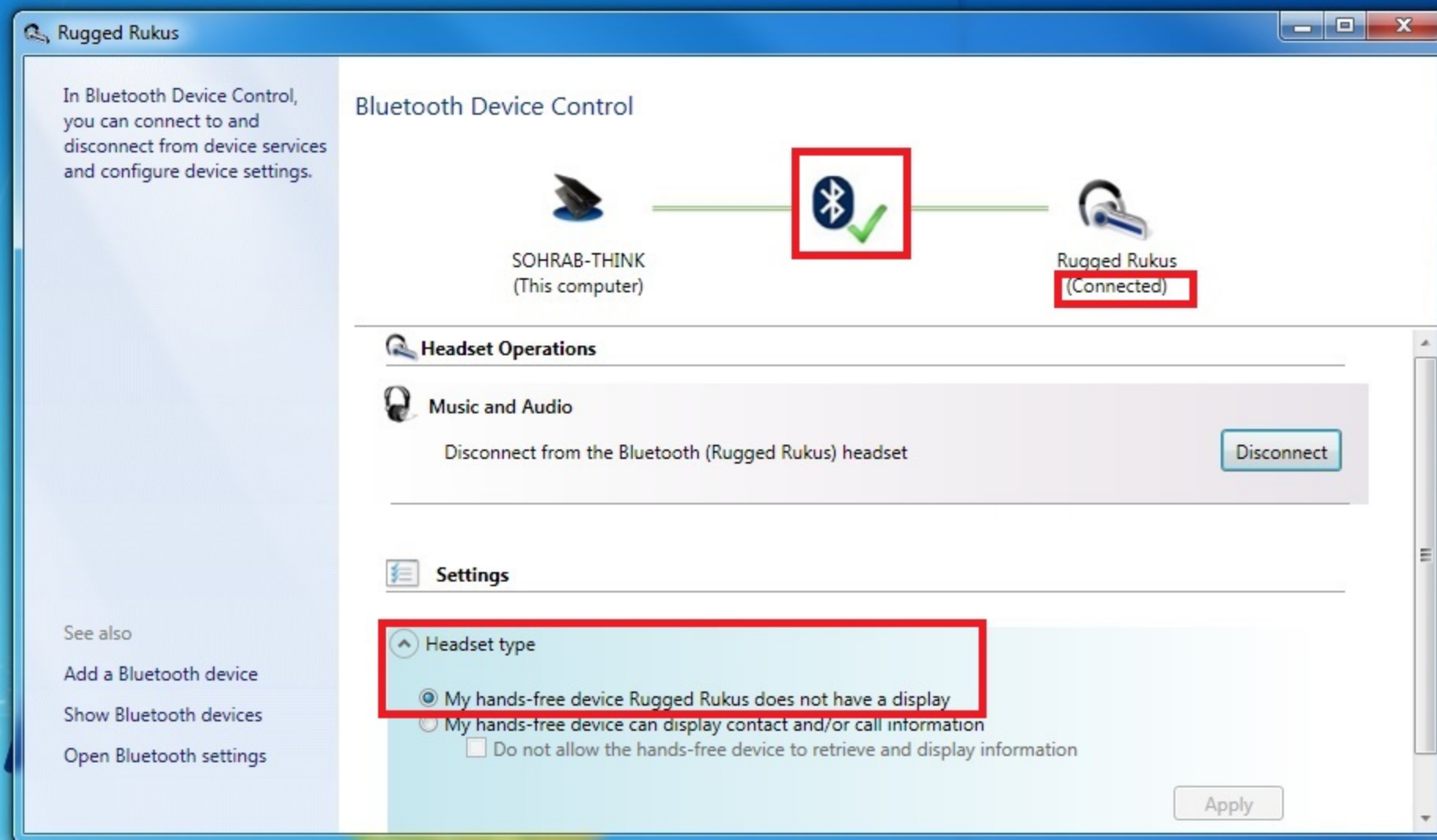
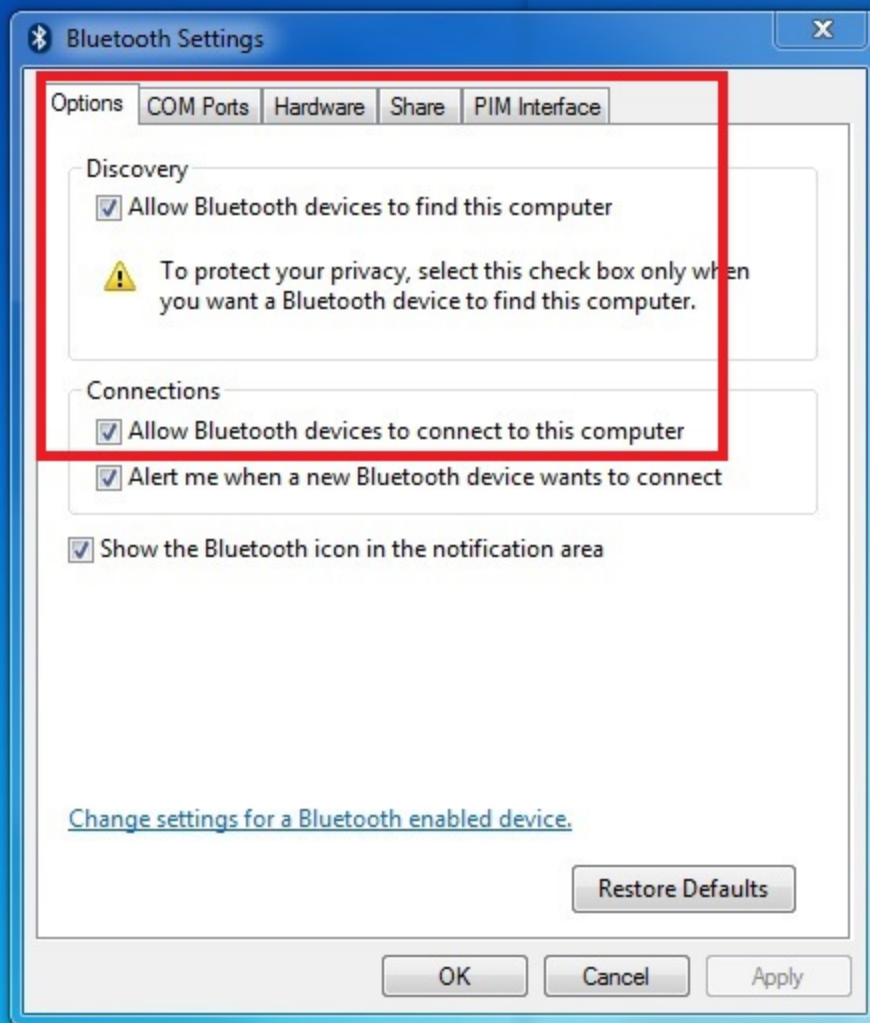
Step 7: click "Show Bluetooth Devices"



Step 8: when this window opens, double-click "Rugged Rukus"



Step 9: click "Connect" to connect your Rugged rukus to your computer



You are set!

Note: if you are having difficulties make sure that under "Headset type" you have "My hands-free device Rugged Rukus does not have a display" selected and then click "Apply"

If you are still having problems connecting also make sure in "Bluetooth Settings" under the "Options" tab to have "Allow Bluetooth devices to find this computer" and "Allow Bluetooth devices to connect to this computer" selected and then press "Apply" and then "OK"